

See your network clearly

The Eftia-netViz Joint Solution

Create visual representations, in graphical and tabular format, of system-wide information

Eftia recognizes that complex information, such as network inventory and circuit configuration data, can sometimes be more easily understood when presented graphically. That's why we're combining our Master.Scribe® Suite with netViz 3D, a unique information-management tool that allows you to visualize and work with complex data systems. NetViz creates visual representations of system-wide information that can be presented in both graphical and tabular format.

The Eftia-netViz joint solution enhances the efficiency and usability of Master.Scribe's comprehensive asset and circuit inventory management capability. In addition to displaying textual information about assets and circuits at any time, service providers can visually display:

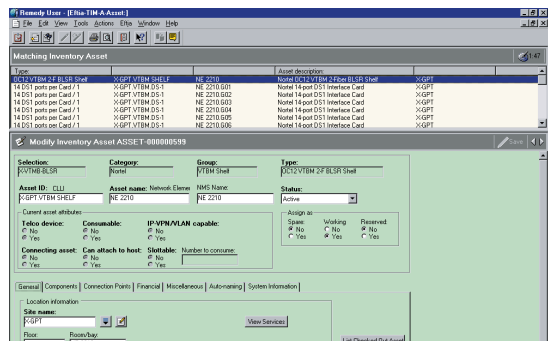
- Network assets at every level of the asset hierarchy as defined by the asset catalog
- End-to-end circuit connectivity for both logical and physical view of a circuit
- The decomposition of a logical or physical circuit into sub-circuits (in cases where the circuit has been channelized)

The Benefits

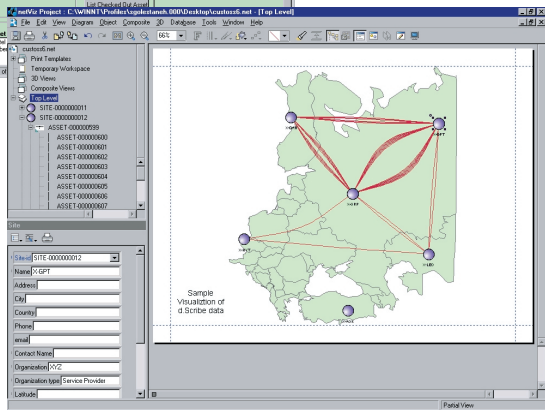
Service providers will benefit from **increased efficiency** and **greater usability** as the Eftia-netViz joint solution will allow them to:

- Visualize objects, their characteristics and their relationships to one another (data can be used to drive contextual graphics, such as blinking, color and filters)
- Access complex network data with fewer actions than are required with screen-based or form-oriented user interfaces
- Display network information in easy-to-use graphical or tabular formats
- Track the horizontal and vertical geographic association between objects

Master.Scribe—
Inventory creation



netViz—
Inventory visualization



- Manipulate the resulting data and relationship information in graphical form
- Maintain a graphical history of network resources and deployments
- Make full use of resources based on the comprehensive information provided



Powering Tomorrow's Network

Together, Eftia and netViz offer you a unique information management tool that creates an easy-to-use comprehensive visual database to help manage your system.

For more information, please call Eftia at 1.888.423.3842.

www.eftia.com